

The Shepherds Bethel Chronicle

May 2025

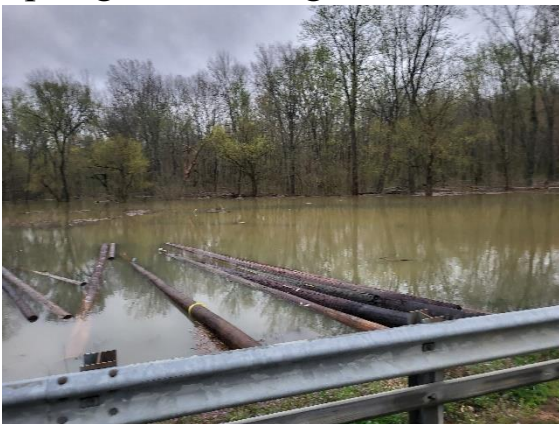
Office: 812-936-9648, Cell: 812-788-0528 web: shepherdsbethel.org, e-mail: shepbeth@shepherdsbethel.org

Spring hot dog and marshmallow roast.



Here are a few of the families we are serving sharing hot dogs, s'mores, and wonderful spring weather together. This is the new fire pit we built last year being put to great use.

Spring wasn't all good weather though!



Shepherd's Bethel experience a few violent storms and had one building damaged from a tornado that passed over head. Our mower and tool shed had the roof blown off and the back wall collapse.

Jesus and his disciples also experience a storm.

Luk 8:23-25 “But as they sailed he fell asleep: and there **came down a storm of wind on the lake**; and they **were filled with water, and were in jeopardy**. And they came to him, and awoke him, saying, Master, master, we perish. Then he arose, and rebuked the wind and the raging of the water: and they ceased, and there was a calm. And he said unto them, **where is your faith?** And they being afraid wondered, saying one to another, **what manner of man is this, for he commandeth even the winds and water, and they obey him.**”

A. There was reason for fear, for the storm was on the verge of sinking their ship.

B. His disciples being short on faith still came to the Master for the solution.

C. After the Master (who all the time had control of the storm) rebukes the wind and waves; His disciples get a dose of the right kind of fear. (Reverential astonishment and godly fear) They recognized, as we must that Jesus is in control of all of life’s situation, even the ones that threaten our very existence.



Our dear Savior, who knew before the creation what was going to happen here, sent a group of friends to rebuild this needed storage shed. Bill, Steve, Dave, Ryan, Drew and myself cut the concrete, reset the posts, built the walls and roof structure and then covered it with new metal.

Bill came back later and rewired the entire building with lights and electrical outlets. What we have now is far better than what the storm took away. Praise the Lord for His ways are truly the best.



Pictured above is the finished job, a place to store God's valuable stuff where at least normal storms won't damage it. I also used our dump truck to haul away two full loads of material to the scrap yard. We recovered \$300 from the metal and our insurance paid the rest. Praise the Lord for always having the best plan of recovery in every situation!



Pastor Jerry Hillenburg and his family are pictured here unloading another truck full of blessings from Hope Baptist Church. They come a few times a year and bring groceries for the mission and missionaries. This has been a great encouragement for these families, some of which are struggling to make ends meet. Thank you Hope Baptist church family!



Amos Soapa is a missionary from Togo West Africa. He told me He had never fished with a rod and reel and was never in a boat. After teaching him how to cast in my driveway, I took him to a spot I know for crappie. Pictured here are 1/3 of the total days catch; he had a ball!

Shepherd's Bethel is not just a place for missionaries to have rent free homes, it is a place where great memories are gathered.

God has allowed me the rare privilege of using something I love to do to bring enjoyment to others. Find someone in your life to share with something that you have found enjoyable.

Lastly: I'm always asked what projects and needs are coming up for Shepherd's Bethel, so let me list a few.

a. The well that supplies water to the entire ministry has begun to take on surface water from some unknown place. (although it is 125 feet deep) I am having companies come give me solution proposals, which will likely include a commercial filter system and softener.

Please pray for wisdom to find the solution and the funds it will take to make it happen. Water clarity and safety is not a choice, but a must.

b. We are replacing the last 6 bedrooms of carpeting with laminated flooring later this summer. I need volunteers to help tear out the existing carpet and help to install the new flooring.

c. Duke energy comodered our road frontage for an easment this year. They will be removing 35 large beautiful pine trees that could grow to interfere with the overhead lines. They will remove the trees, but I must landscape and rethink the layout of the frontage roadway. These trees have provided beauty and security along a 2,000 foot stretch of the mission frontage. At some point we may want to replant or replace this wall of privacy.

d. The office furnace and air handler gave out this winter. We used space heaters all winter, but would like to replace it before next winter. It will be just over \$7,000.00 for a new unit.

This year is the 55th year of service for SBBM. How deeply thankful we are to supply this place which provides housing and a host of amendities to these wonderful families.

Those of you that give financially or pray continuously are the backbone for what is being done.

Thank you once again for you faithful service!

Michael & Susan Weiss